



# Matthew Steinke : DELIRIUMS

June 9–July 30, 2018

Three acoustic robots emote music accompanied by found voice recordings and animations. Each of the robots mimics a human personality disorder: Cluster A (odd, eccentric), Cluster B (dramatic, emotional, erratic), and Cluster C (anxious, fearful). The robots “sing” round robin in a group therapy session.

Behavior is a primary concern for an artist working with electronic music and robotic sculpture. How is your synthesizer misbehaving? What is making this machine malfunction? “Fixing” and “making” become one in the same. Knobs that control speed and resolution, predictability and randomness, are blended and tuned to coax meaningful expressions from a device.

Over several months, Steinke compiled transcriptions of archived newscasts and Youtube selfies from anonymous individuals diagnosed with personality disorders. The text is synthesized into the monologues of three fictional personalities that represent one of each cluster of disorders from The Diagnostic and Statistical Manual of Mental Disorders (DSM). These include Cluster A (odd, eccentric), Cluster B (dramatic, emotional, erratic), and Cluster C (anxious, fearful). Through music and movement, these autonomous instruments enact the emotional content of their respective personalities while their monologues are read aloud by voice synthesizers on a synced headphone track. The video track is also synced and projected alongside the performances providing clues about the imagination of each character as they recite their dilemmas in a group therapy, round robin fashion.

Viewing hours:  
Saturdays 3–6:30 pm  
or schedule a visit, email  
[hello@northern-southern.com](mailto:hello@northern-southern.com)

Price list available

**N  
S**

**Northern–Southern**

1900-B East 12th Street, Austin, TX 78702

[northern-southern.com](http://northern-southern.com)

*DELIRIUMS explores the space between the psyche and the body through robotic sculpture, animation, and sound. I have always been interested in the ephemeral parts of things that cannot be seen like the electrons in a circuit, the music from an instrument, or the thoughts of a person. I am also interested in how these internal processes can manifest in physical space as movement, sound, and behavior.*

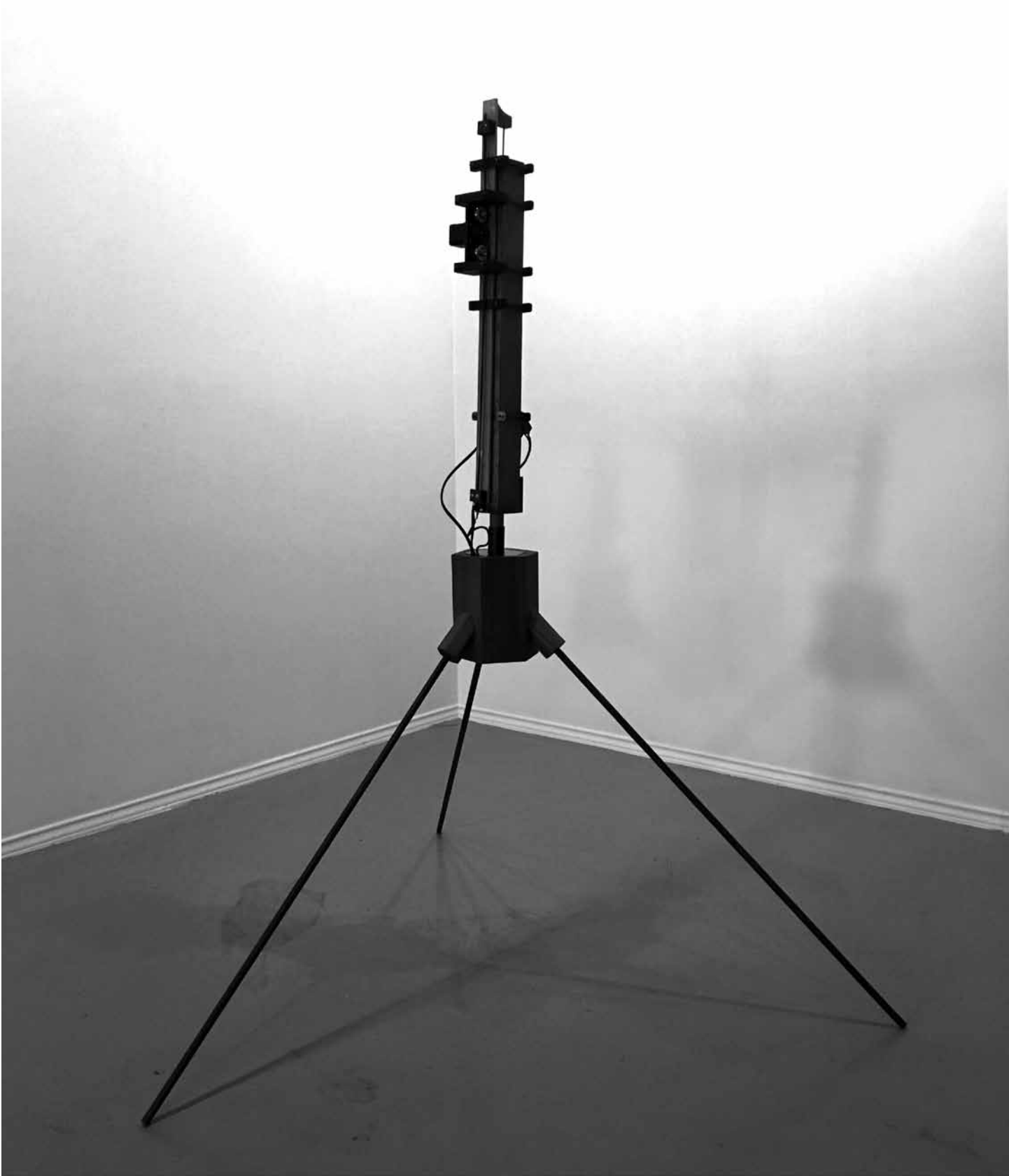
*In addition to the phenomenological effects of a mechanical object, I am intrigued by its narrative. How does the “Métamatic” soul emerge from parts, circuitry, and programming? I explore AI technology, not to ultimately produce a “well oiled” learning machine, but to synthesize a range of behaviors, mental states, and emotional experiences.*

— Matthew Steinke



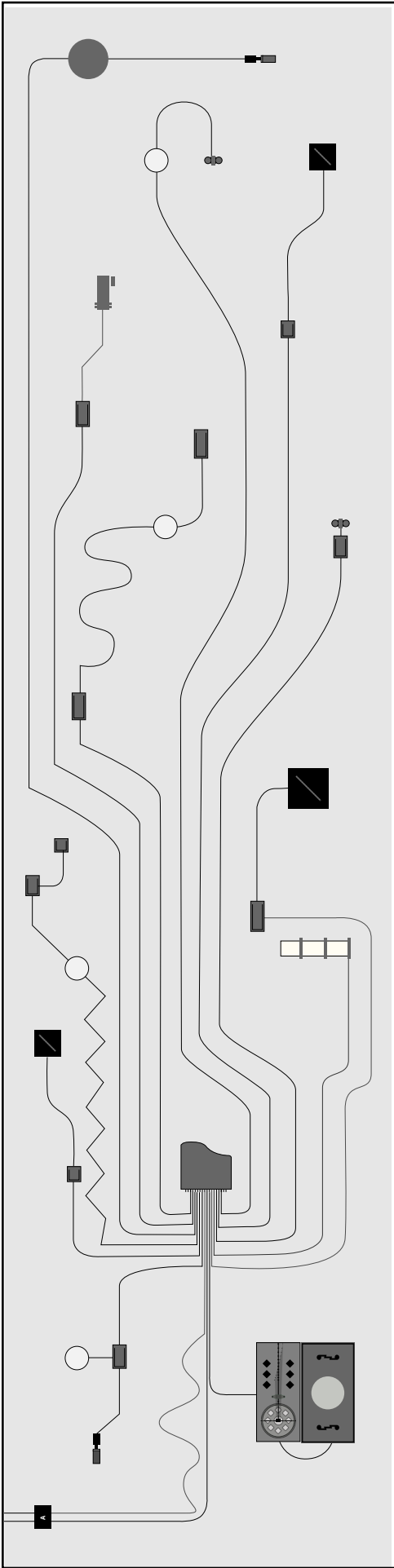
Matthew Steinke  
*Cluster B*  
2018

dramatic, emotional, erratic



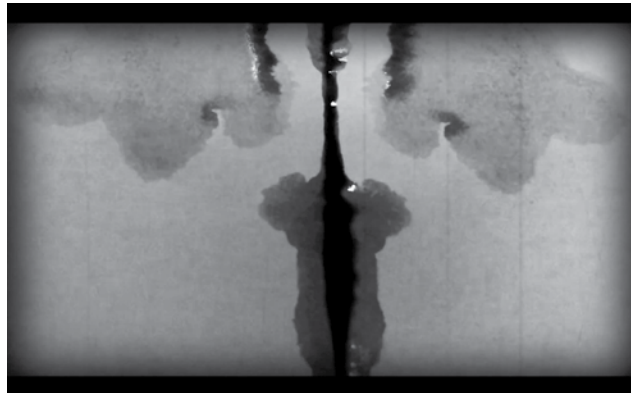
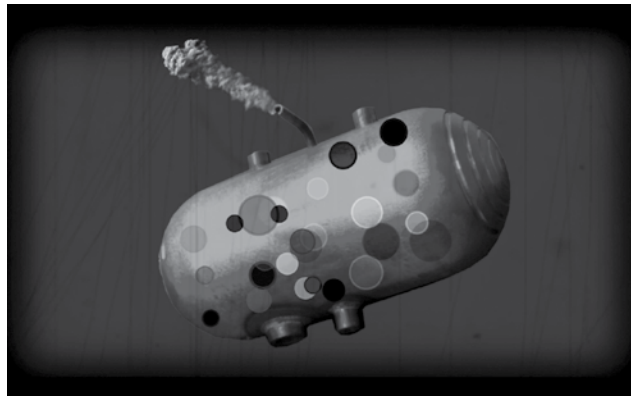
Matthew Steinke  
*Cluster C*  
2018

anxious, fearful

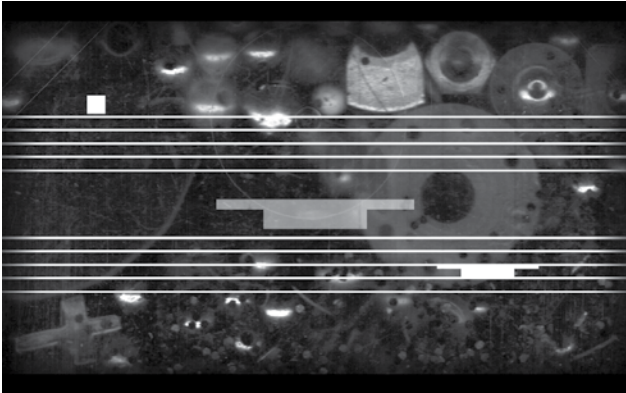
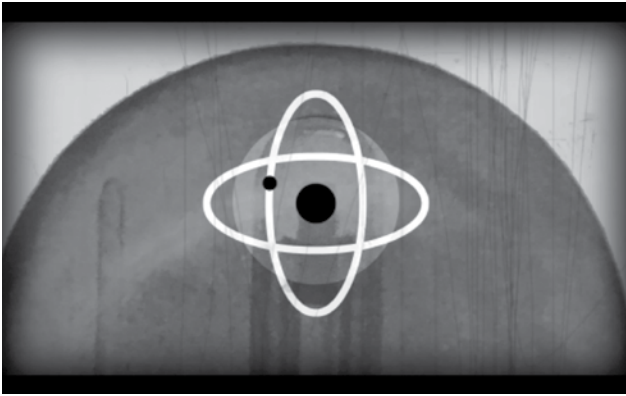


Matthew Steinke  
Cluster A  
2018

odd, eccentric



Matthew Steinke  
*Deliriums*  
2018  
animations



Matthew Steinke  
*Deliriums*  
2018  
animations



**MATTHEW  
STEINKE**

**:**

**DELIRIUMS**

**SUMMER 2018**

**N  
S**

Northern-Southern  
1900-B East 12th Street  
Austin, TX 78702

[northern-southern.com](http://northern-southern.com)